

INSTRUCTIONS: DIY Friendly Monster Valentines Mailbox

SUPPLIES:

Cardboard/Card Stock/Heavy Paper (at least one 11" x 17" size and three 8.5" x 11" size)
Sissors or X-acto Knife
Glue or Tape

INSTRUCTIONS:

STEP 1: Print out either the blank template or our colorful monster template on regular paper.

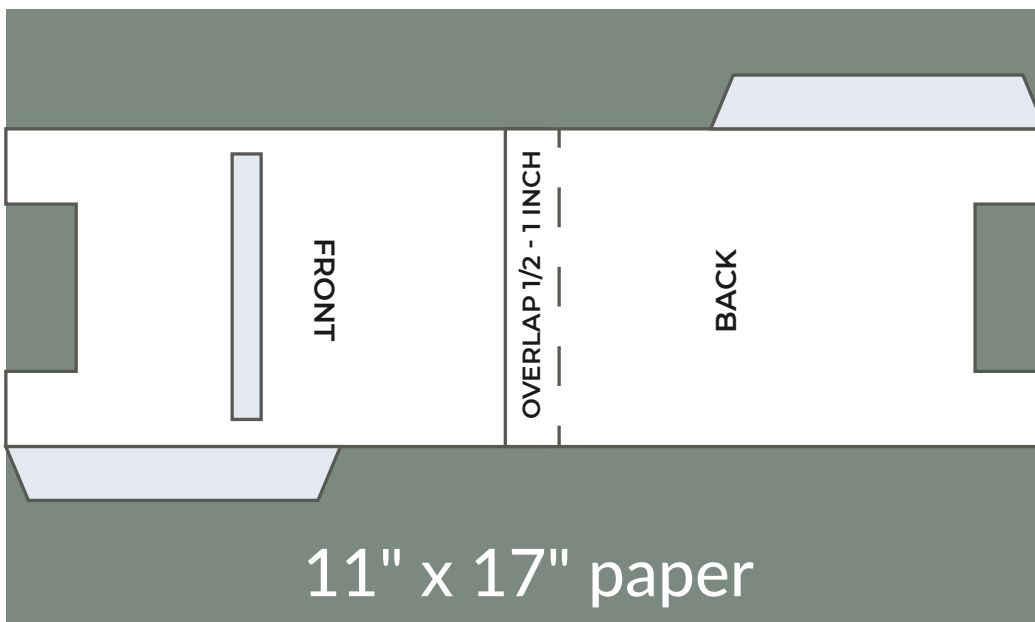
STEP 2: Either tape your blank template or glue the colorful monster template to sturdy paper or cardboard. When gluing the front and back sides onto 11" x 17" paper, you'll need to align them with the tops overlapping about ½ -1" (See figure A.) The rest of the sides can be glued separately to other sheets of paper.

STEP 3: Cut out each side of your mailbox with scissors or X-acto knife and don't forget the mail slot on the front side! (If you're using the blank template, you may get rid of the template here and just use your sturdy pieces from here)

STEP 4: If using the blank template, decorate with stickers, crayons, markers, ribbon, etc.

STEP 5: Fold the flaps and glue or tape to each of the 4 sides, assembling the mailbox, taping or gluing the bottom piece last.

Figure A



GREGG RANCH
MARBLE FALLS

Sign up at www.greggranch.com/stay-connected/ to get the latest information and news from Gregg Ranch.

FRONT

CUT & REMOVE

FOLD & PASTE

GREGG RANCH
MARBLE FALLS

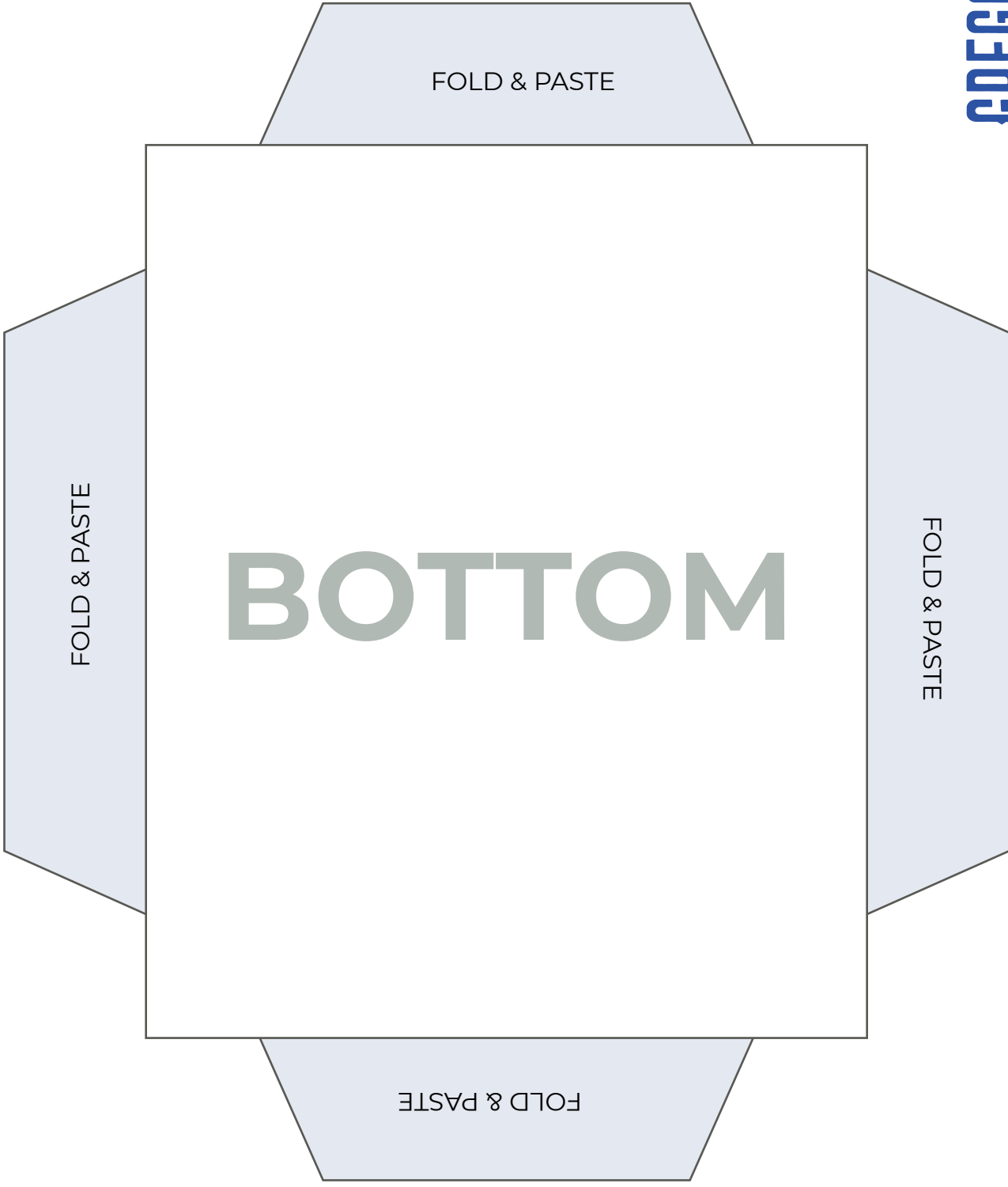
Sign up at www.greggranch.com/stay-connected/ to get the latest information and news from Gregg Ranch.

BACK

FOLD & PASTE

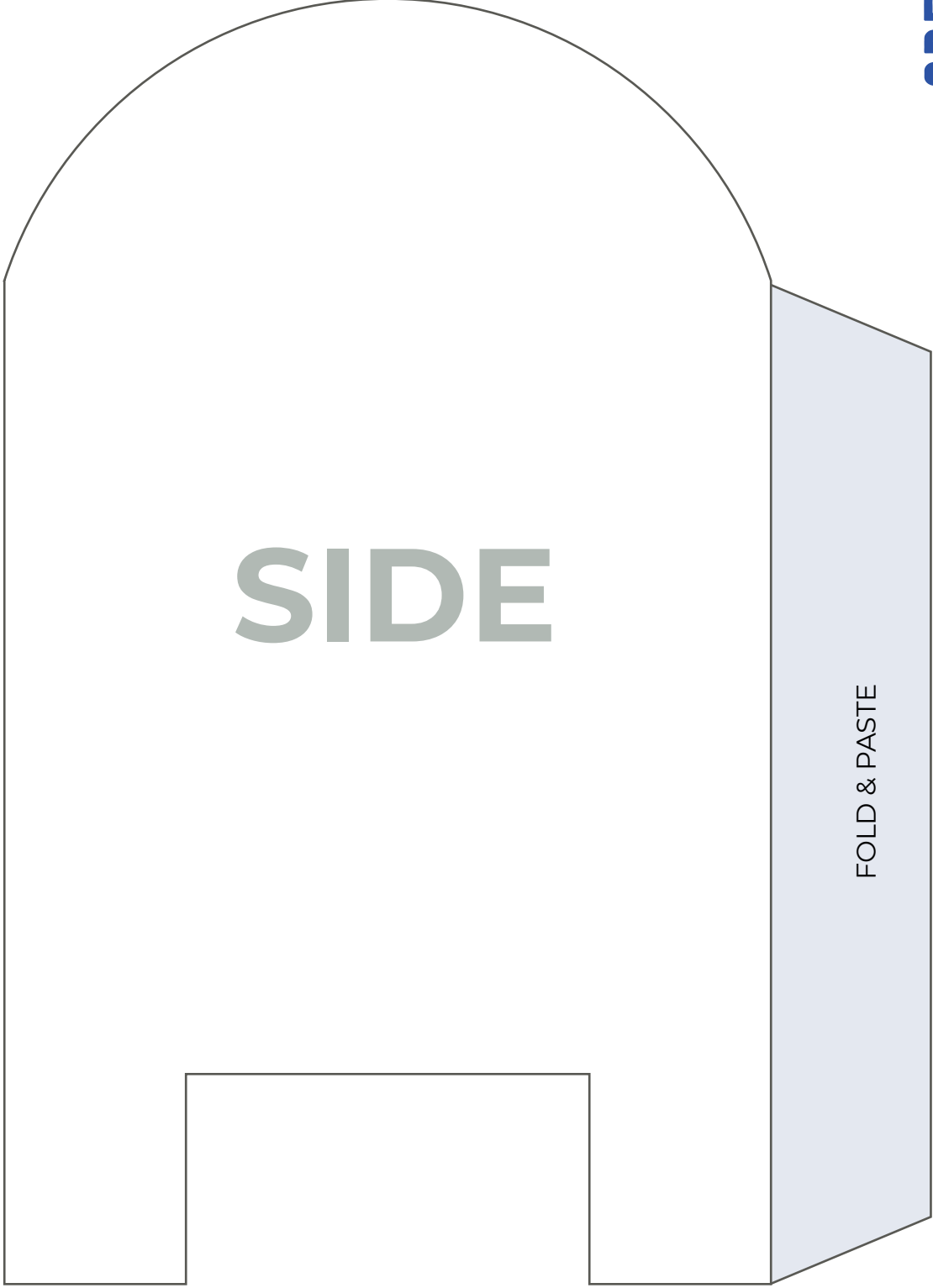
GREGG RANCH
MARBLE FALLS

Sign up at www.greggranch.com/stay-connected/ to get the latest information and news from Gregg Ranch.



GREGG RANCH
MARBLE FALLS

Sign up at www.greggranch.com/stay-connected/ to get the latest information and news from Gregg Ranch.

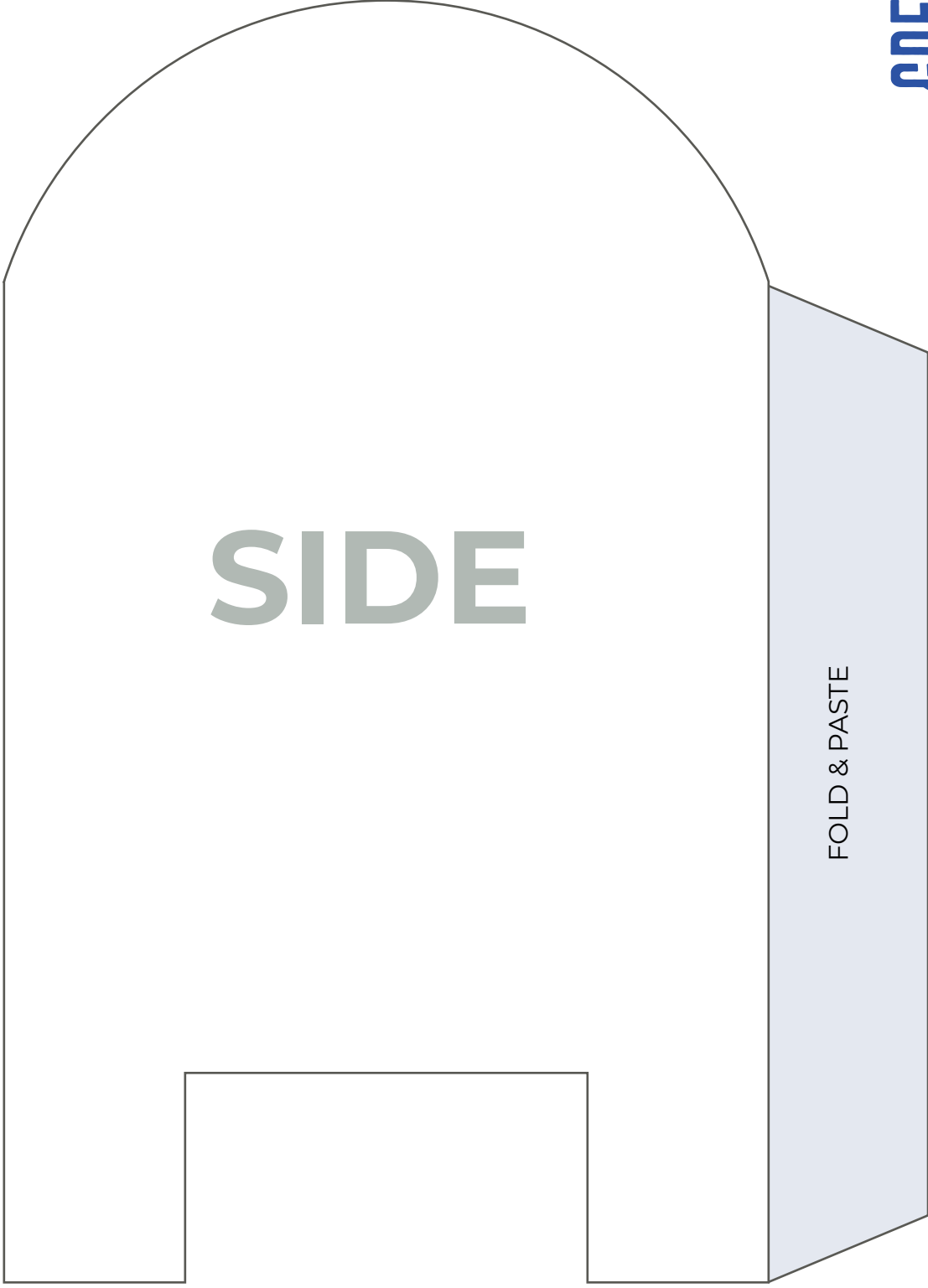


SIDE

FOLD & PASTE

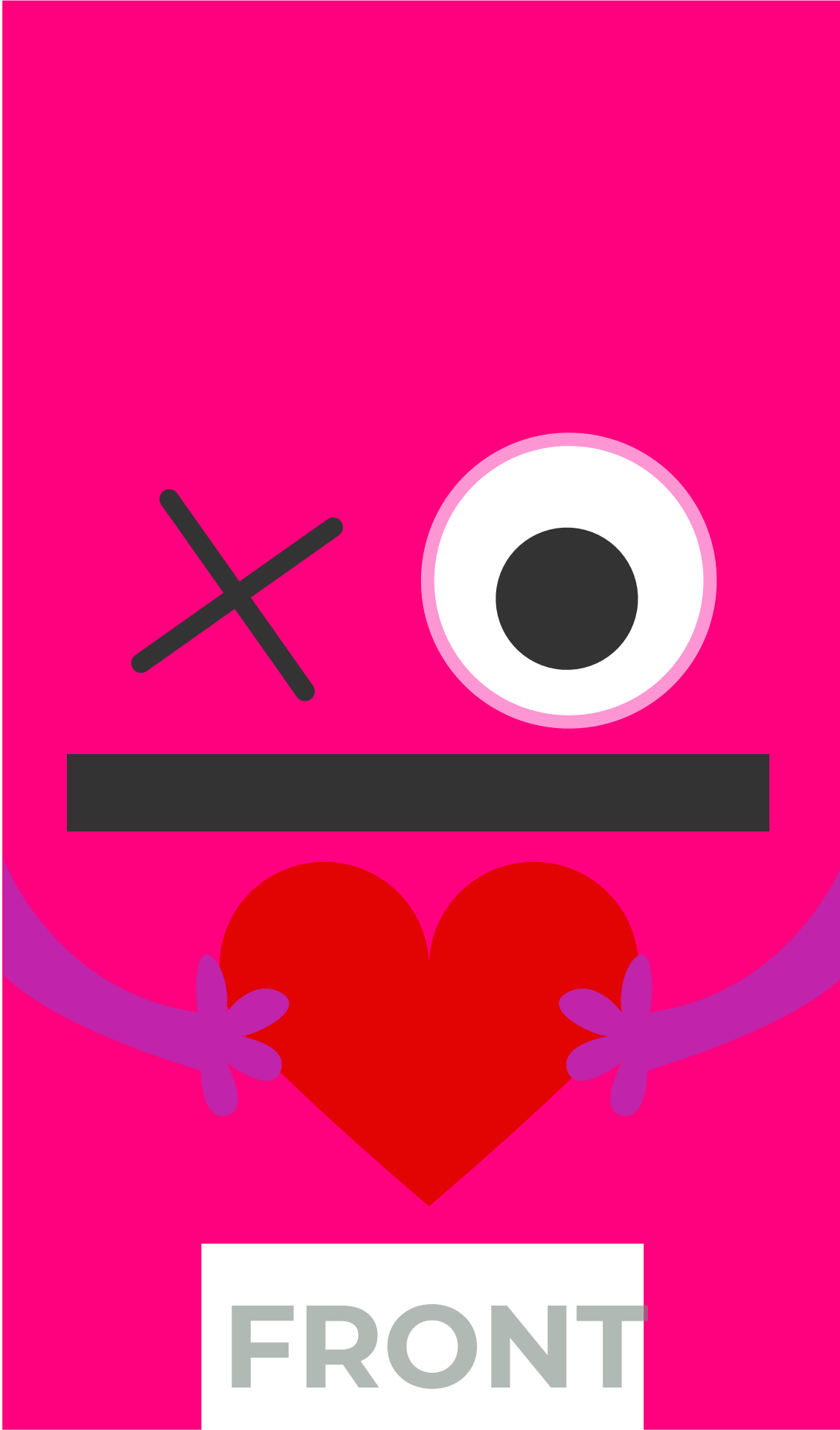
GREGG RANCH
MARBLE FALLS

Sign up at www.greggranch.com/stay-connected/ to get the latest information and news from Gregg Ranch.



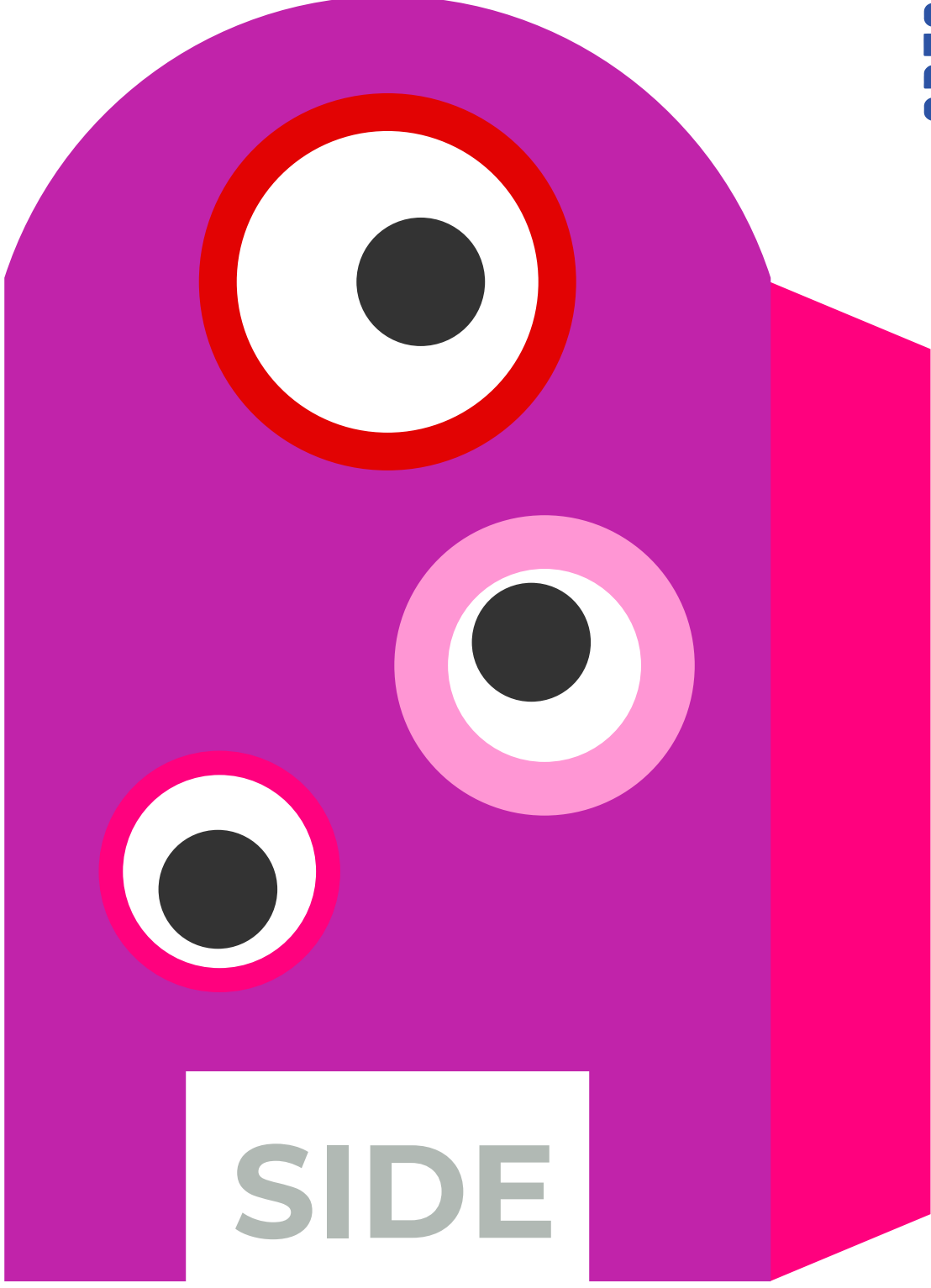
GREGG RANCH
MARBLE FALLS

Sign up at www.greggranch.com/stay-connected/ to get the latest information and news from Gregg Ranch.



GREGG RANCH MARBLE FALLS

Sign up at www.greggranch.com/stay-connected/ to get the latest information and news from Gregg Ranch.



GREGG RANCH
MARBLE FALLS

Sign up at www.greggranch.com/stay-connected/ to get the latest information and news from Gregg Ranch.

FEED
ME
VALENTINE

BACK

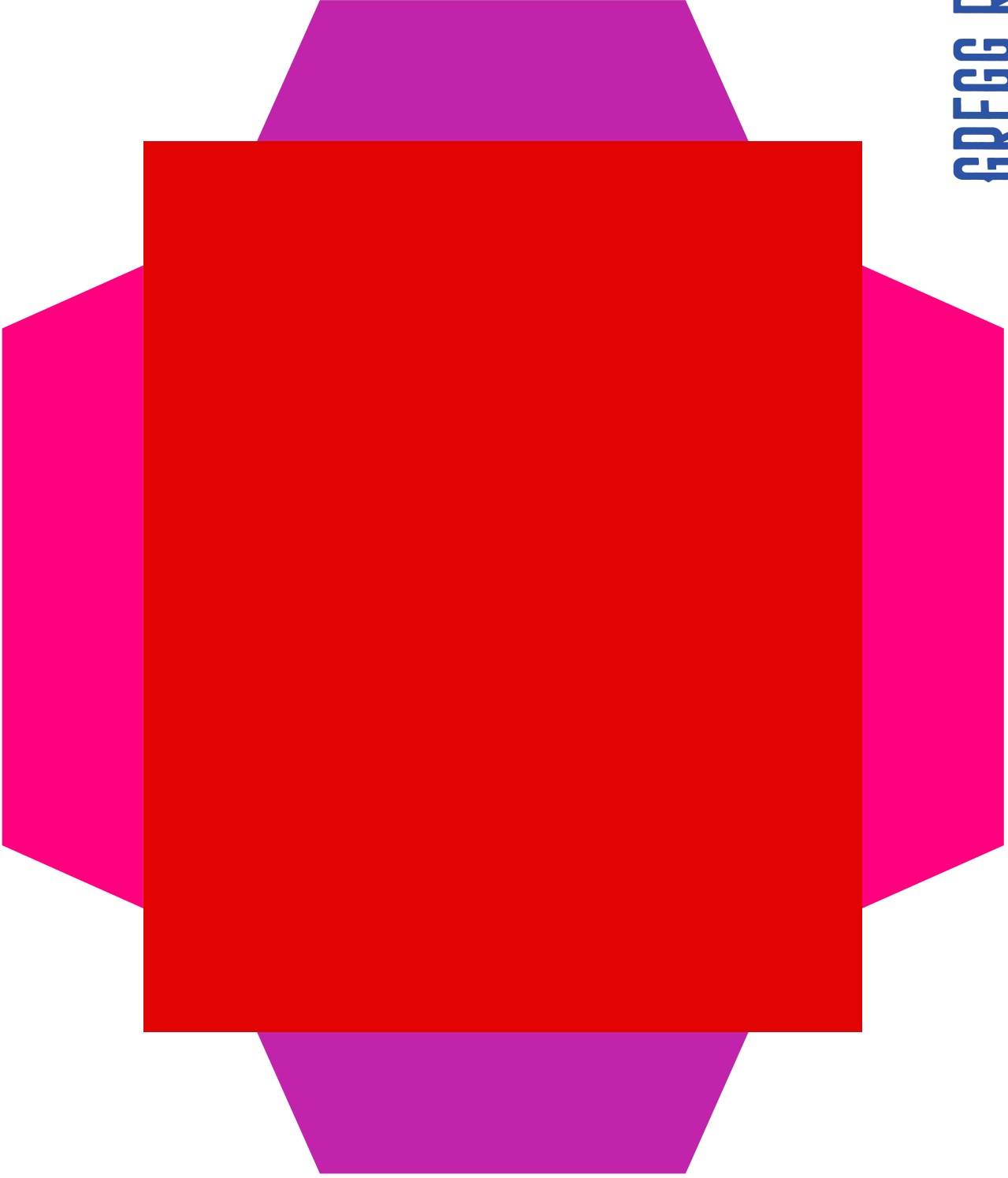
GREGG RANCH
MARBLE FALLS

Sign up at www.greggranch.com/stay-connected/ to get the latest information and news from Gregg Ranch.



GREGG RANCH
MARBLE FALLS

Sign up at www.greggranch.com/stay-connected/ to get the latest information and news from Gregg Ranch.



BOTTOM

GREGG RANCH
MARBLE FALLS

Sign up at www.greggranch.com/stay-connected/ to get the latest information and news from Gregg Ranch.